

Post Pilot Meeting

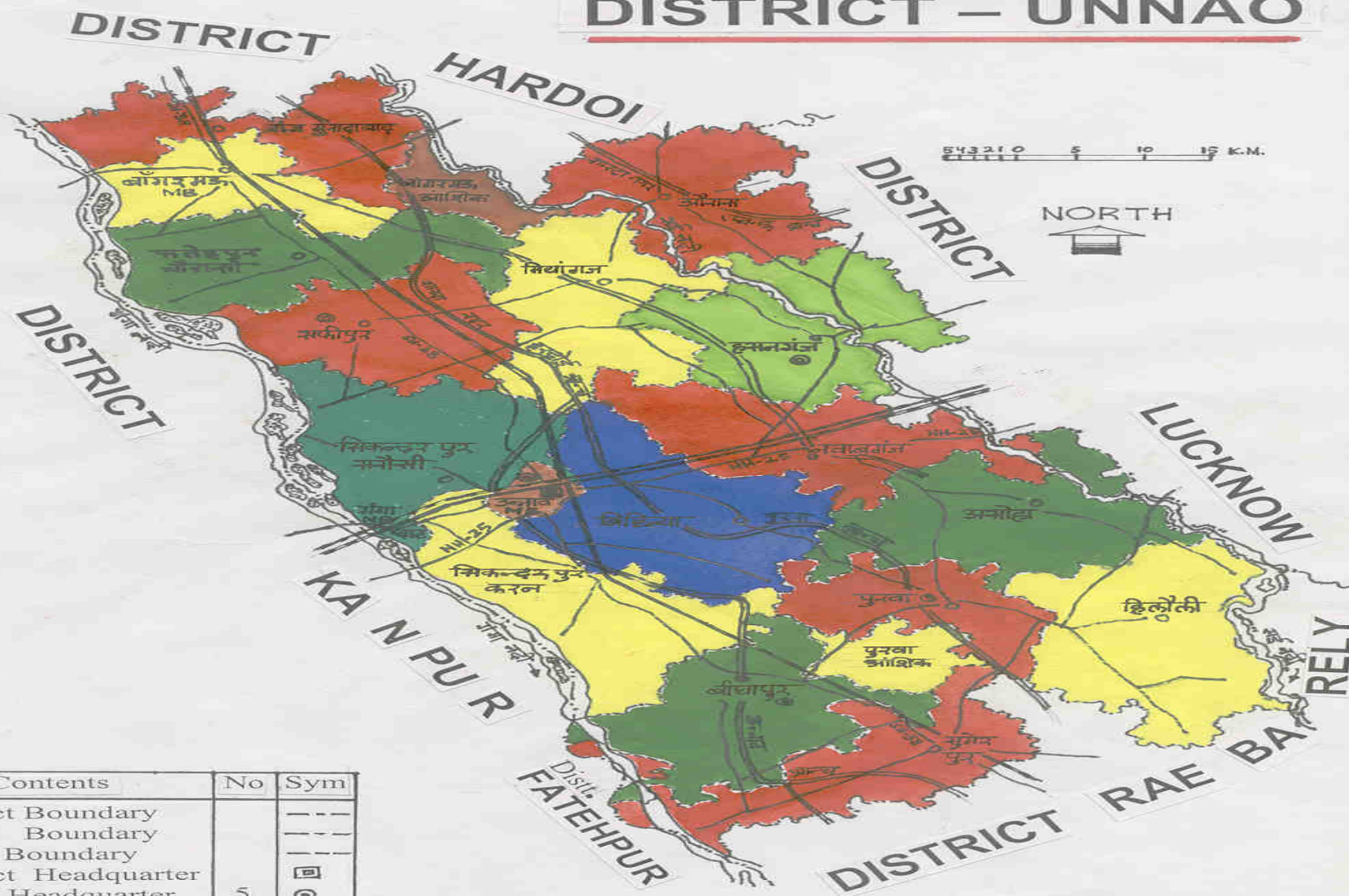
Eli Lilly Project Intervention 3

**Training of Traditional Healers in
Block- Nawabganj, District- Unnao**

**Support for Implementation &
Research (SIR)**

Lucknow

INDEX MAP DISTRICT – UNNAO



Sl.No	Contents	No	Sym
1.	District Boundary		---
2.	Tehsil Boundary		---
3.	Block Boundary		---
4.	District Headquarter		□
5.	Tehsil Headquarter	5	○
6.	Block Headquarter	16	○
7.	Nagar Palika	3	MB
8.	River		~~~~~
9.	Canal		~~~~~
10.	Rastriya Marg		NH-25
11.	Prantiya Marg		SH-38
12.	Janpadiya Marg		---
13.	Northern Railway		
14.	N.E. Railway		####

Objective

- Increase in Referral
- Increase in Testing
- Increase in Follow up for Completing Full Course of Treatment

Activities Carried Out

- Situational Analysis
- Sensitisation of RNTCP Staff
- Sensitisation of Traditional Healers
- Follow Up
- Re-Sensitisation of Traditional Healers
- Follow Up

Program Staff

- Program Coordinator (Part Time)

Achievements

- Use of Traditional Healers for TB Control
- Increased OPD
- Increased Referrals
- Increased Detection of TB Patients
- Increased Treatment
- Use of Referral Slip

Months	OPD 2010-11	OPD 2011-12
June	3175	3335
July	3620	2934
August	4054	3432
September	4022	4230
October	2110	4704
November	2538	2983
December	3052	3047
January	2235	2852
Feburay	3025	3195
March	3459	3451
April	3074	2921
May	3215	4150
June	3335	3360
Total	40914	44594
Impact (No.)		3680
Impact (%)		9%

Months	Sputum Referral (Testing) 2010-11	Testing 2011-12
June	86	118
July	81	80
August	88	104
September	83	113
October	53	60
November	78	93
December	74	65
January	60	72
Feburay	70	105
March	77	159
April	127	137
May	103	142
June	118	122
Total	1098	1370
Impact (No.)	272	
Impact (%)	25%	

Months	Positive Cases 2010-11	Positive 2011-12
June	10	21
July	20	18
August	12	14
September	14	19
October	9	6
November	8	16
December	19	8
January	5	11
Feburay	8	16
March	13	20
April	20	27
May	19	25
June	21	17
Total	178	218
Impact (No.)	40	
Impact (%)	22%	

Months	Treatment 2010-11	Treatment 2011-12
June	26	23
July	29	31
August	26	27
September	29	34
October	25	17
November	21	22
December	26	16
January	21	12
Feburay	25	24
March	19	12
April	38	23
May	22	36
June	23	21
Total	330	298

Follow Up

- Follow Up
- Replication in Other Areas of Remaining 15 Blocks

Challenges

- Coverage of Wide Spread Geographical Area
- Limited No. of Activities
- Limited Resource Availability
- Reluctance of Senior Officials

Future Plan Proposed

- Replicate Program in nearby 3 Districts:
 - Unnao (16 Blocks)
 - Raebareli (16 Blocks)
 - Shahjahanpur (15 Blocks)

Map of Raebareli

